

iM3[®] PIEZO P6 TIP WEAR GUIDE

Knowing when to replace your tips is essential as tip wear will significantly reduce scaler performance – as it alters the ultrasonic frequency.

Keep this Wear Guide handy so you can easily check before scaling.

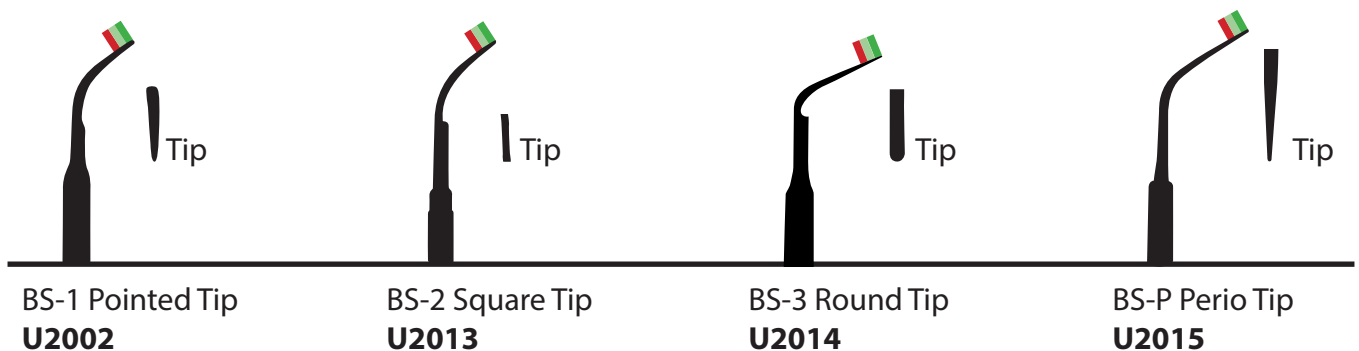
What are the results of working with a worn tip?

- Inefficient scaling
- Inferior tip performance
- Discomfort for both vet and patient
- Poor misting of coolant (water) around the scaling tip

Replacement tips are available from iM3 online or your local iM3 distributor. Learn more about iM3 tips at www.im3vet.eu or www.im3vet.co.uk



- Align base of piece with the line _____
- Place piece over relevant image starting from base to tip
- Check the tip wear by seeing what coloured bar your tip aligns with



Yes ✓
New tip up to 1mm
Optimum Efficiency



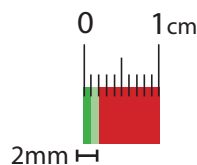
Okay
1mm to 2mm
time to re-order



No
Beyond 2mm
time to dispose



**Tip worn beyond 2 mm
please do NOT use**



This scale is in cm and is intended to be printed at actual size on A4 paper. Check the scale using a ruler to confirm it has printed at the correct size and adjust your printer settings if needed.

