

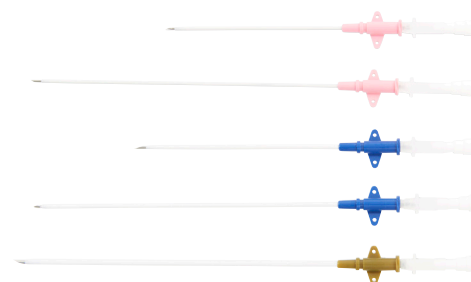
EQUIVET HiFlow IV Catheters

Intravenous cannula for horses is used for intermittent peripheral intravenous procedure. It is used during procedures where frequent or permanent application of fluids, medicaments or blood is required. In our equine range of IV catheters two options are available – a long term, which can stay in the vein up to 30 days and a short term, which can be left in the vein up to 3 days.

EQUIVET HiFlow LongTerm IV Catheter

The polyurethane large bore catheter over needle enables the catheter to dwell for up to 30 days. The EQUIVET HiFlow LongTerm (HFLT) IV Catheter softens at body temperature. Some common catheter-related problems, such as phlebitis, can be minimised with these polyurethane catheters. Colour-coded wings aid identification of cannula size. Non-thrombogenic and non-cracking. Can be safely left in the vein for up to 30 days. Suture wings with holes.

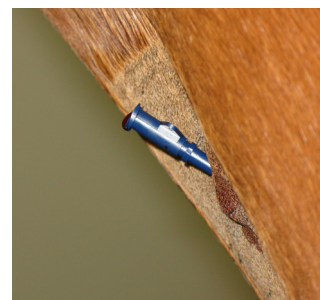
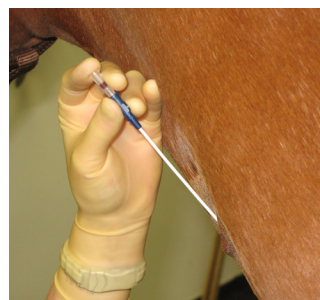
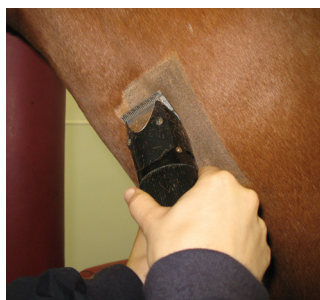
Cat. No	Description
122000	EQUIVET HiFlow Long-Term IV Catheter 16G x 3.50", 10/pk
122001	EQUIVET HiFlow Long-Term IV Catheter 16G x 5.25", 10/pk
122005	EQUIVET HiFlow Long-Term IV Catheter 14G x 3.50", 10/pk
122010	EQUIVET HiFlow Long-Term IV Catheter 14G x 5.25", 10/pk
122015	EQUIVET HiFlow Long-Term IV Catheter 12G x 5.25" 10/pk



EQUIVET HiFlow Short Term IV Catheter

The FEP (fluorinated ethylene propylene) IV catheter is a radiopaque catheter with three embedded X-ray contrast lines. The catheter with transparent ultra-thin wall to optimise flow rate Shape of catheter tip allows atraumatic introduction and prevents mechanical vein irritation. Easy introduction due to the rigidity of the catheter. Luer lock connector. Colour coding for easy identification of dimension. Can be safely left in the vein for up to 72 hours. Flexible wings with holes enable easy fixation to animal skin.

Cat. No	Description
122030	EQUIVET HiFlow Short Term IV Catheter 16G x 2,40", 10/pk
122031	EQUIVET HiFlow Short Term IV Catheter 16G x 5,10", 10/pk
122032	EQUIVET HiFlow Short Term IV Catheter 14G x 3,10", 10/pk
122033	EQUIVET HiFlow Short Term IV Catheter 14G x 5,10", 10/pk
122034	EQUIVET HiFlow Short Term IV Catheter 12G x 3,10", 10/pk
122035	EQUIVET HiFlow Short Term IV Catheter 12G x 5,10", 10/pk



EQUIVET Large Bore IV Administration Set

Large animals such as horses and cattle may require tremendous amounts of IV fluids during a short period of time. Conventional smaller IV sets cannot meet the fluid demands of eg a 600 kg horse. The Large Bore IV Set increases flow rate up to 10 l per hour. This volume is necessary in severe colic and critical care emergencies.

The diameter of the Large Bore system is twice the diameter of conventional IV drips. This translates into 16 times the flow rate of the conventional sets.

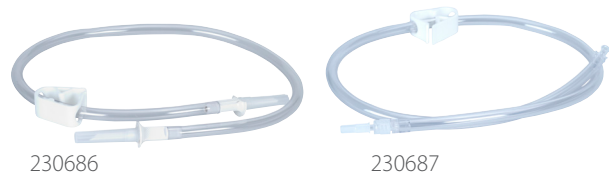
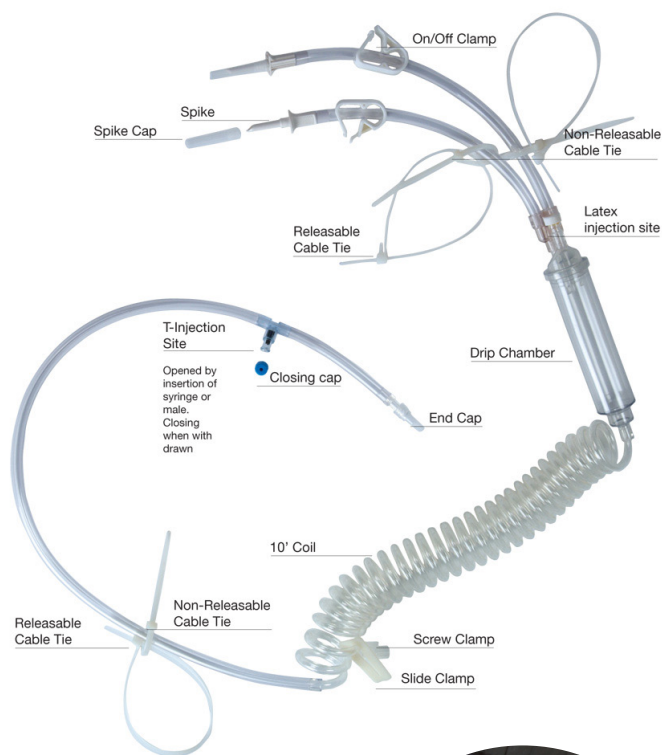
Cat. No	Description
230692	EQUIVET Large Bore IV Administration Set, Sterile, 10/pk

Accessories:

Large Bore Transfer Set
For hooking up additional fluid bags, double-ended spike with 30 cm of tubing and on/off dura clamp, sterile

Cat. No 230686

Large Bore Extension Set
75 cm with screw type female luer and spin luer lock, sterile
Cat. No 230687



EQUIVET Infusion Bag Swivel

With 5 hangers. Rotates to allow your patient to move freely without dislodging or entangling the IV set.

Cat. No	Description
230680	EQUIVET Infusion Bag Swivel

